

**Barco tipo granelero**

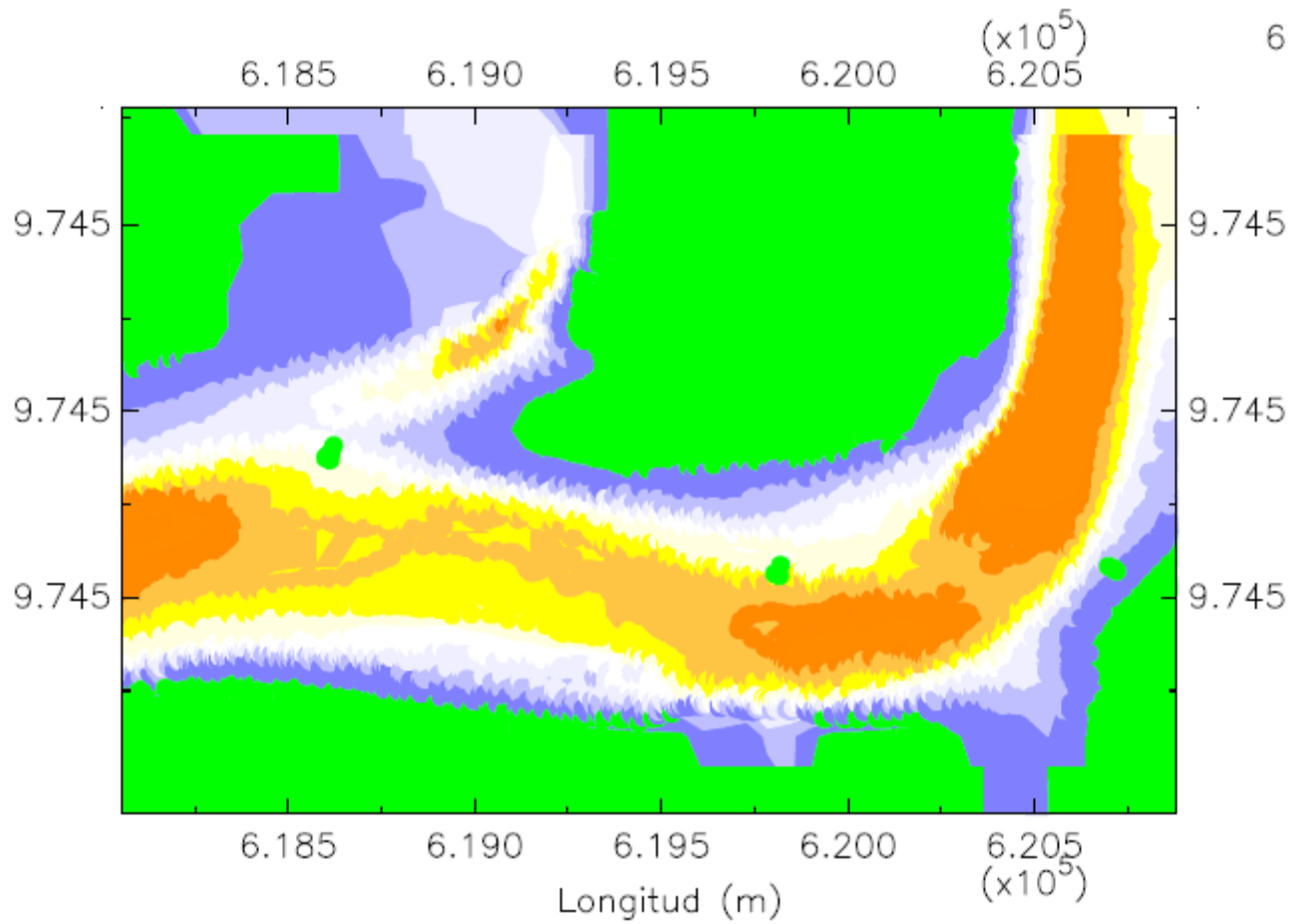
**Eslora: 225 m**

**Manga: 32.20 m**

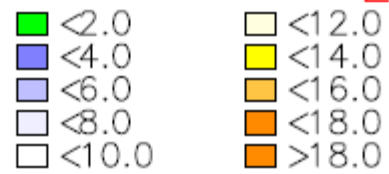
**Calado: 12 m**

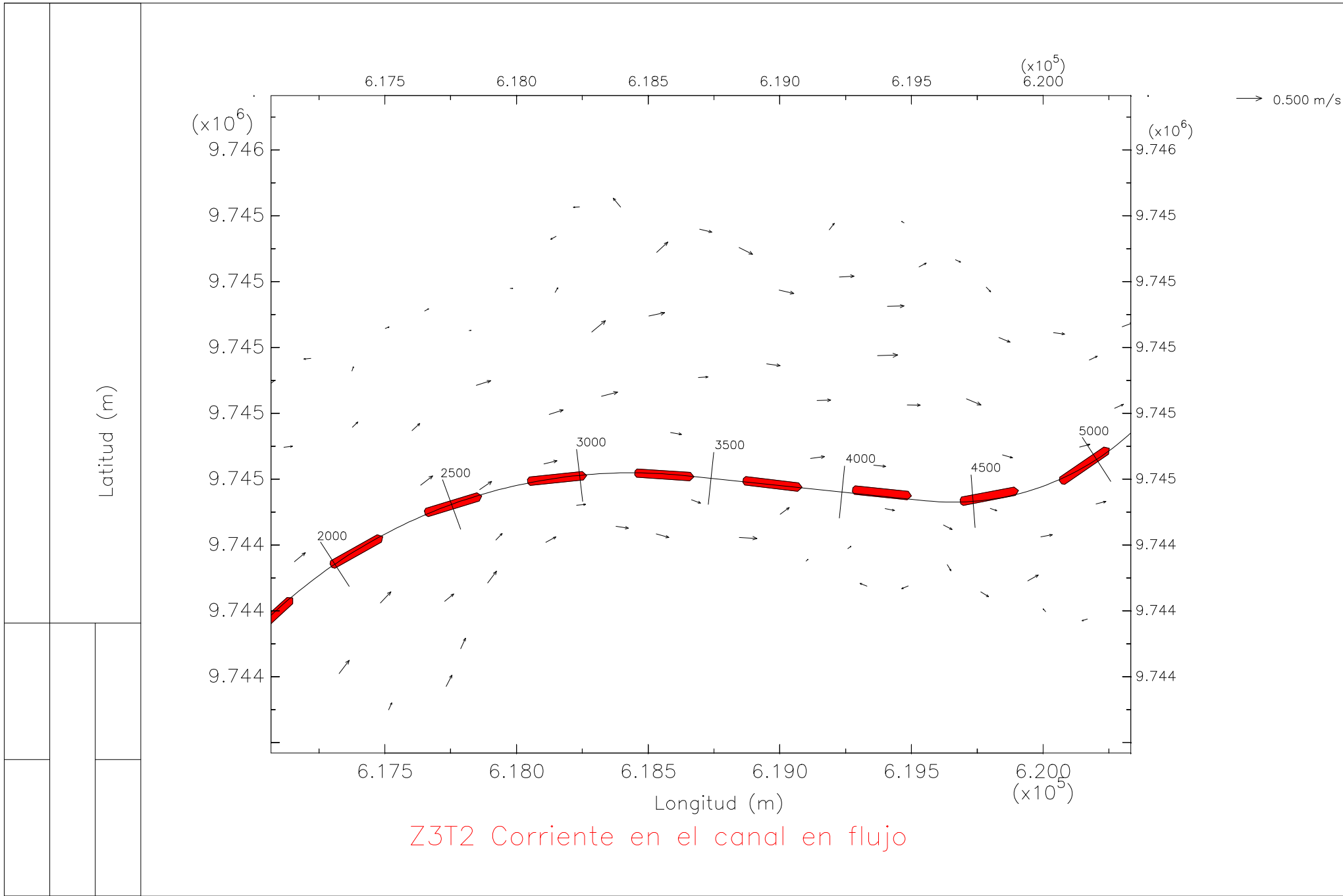
**En la zona 3, tramo 2**

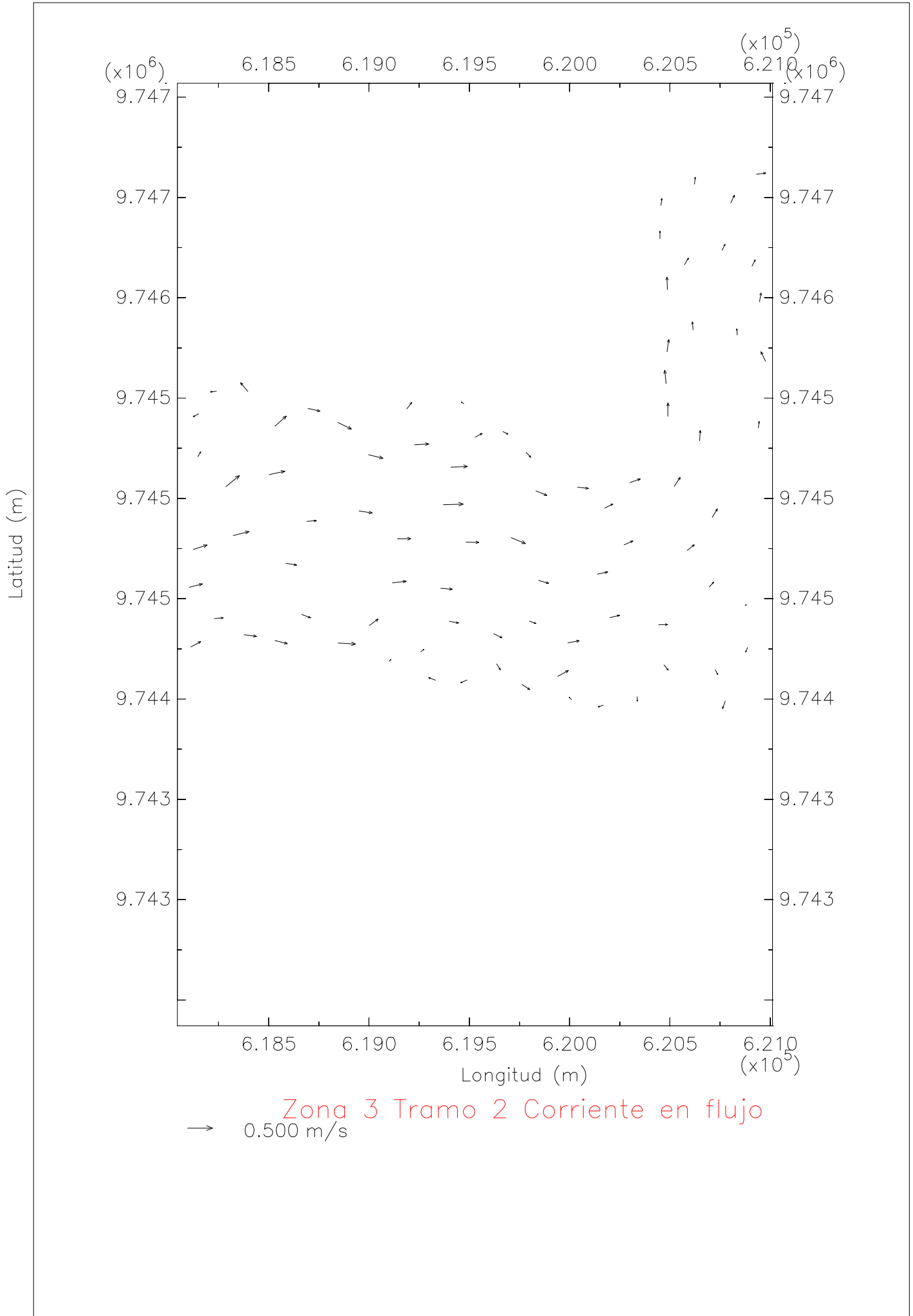
**Bajo condiciones de llenante**

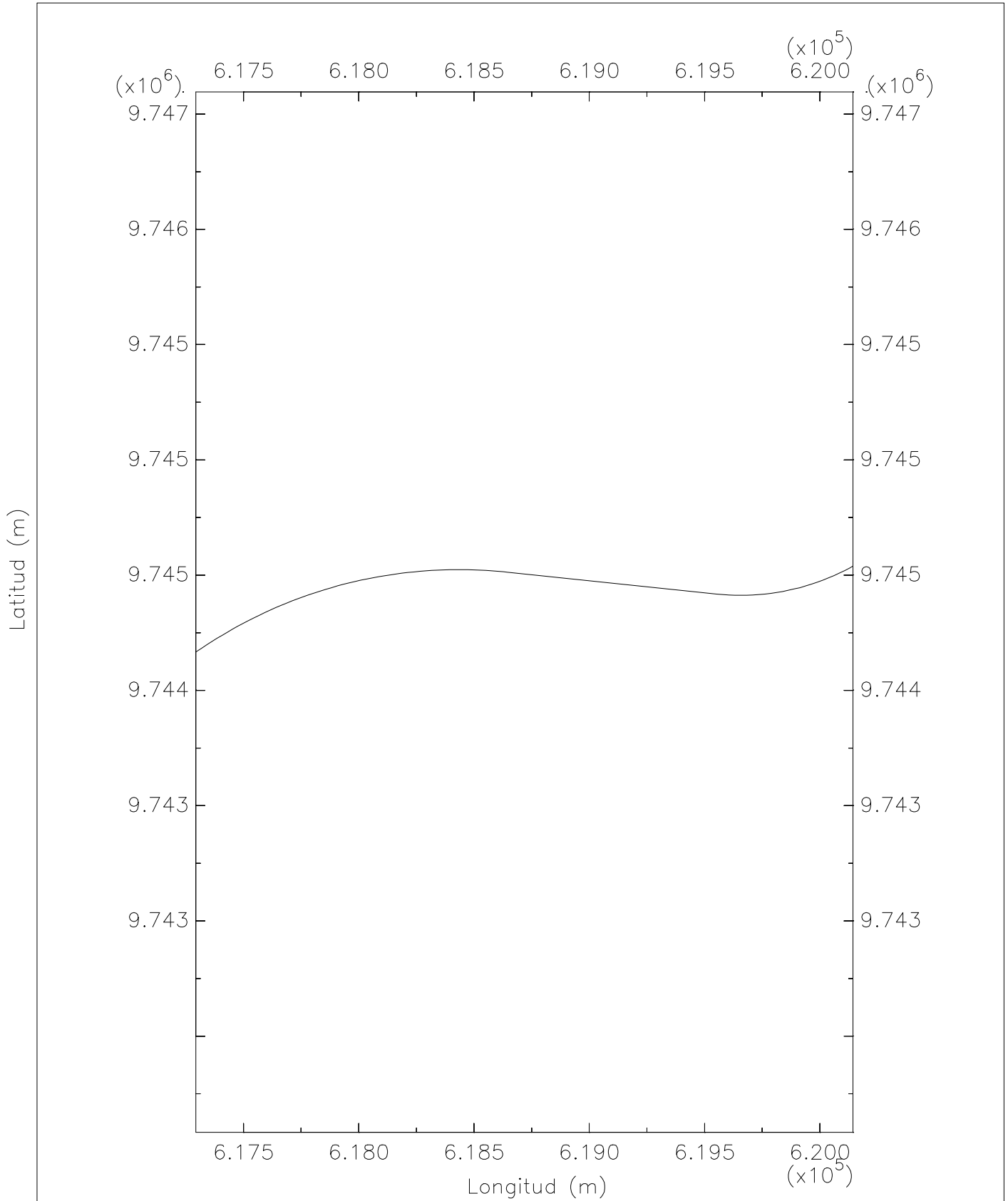


### Zona 3 Tramo 2 Profundidad

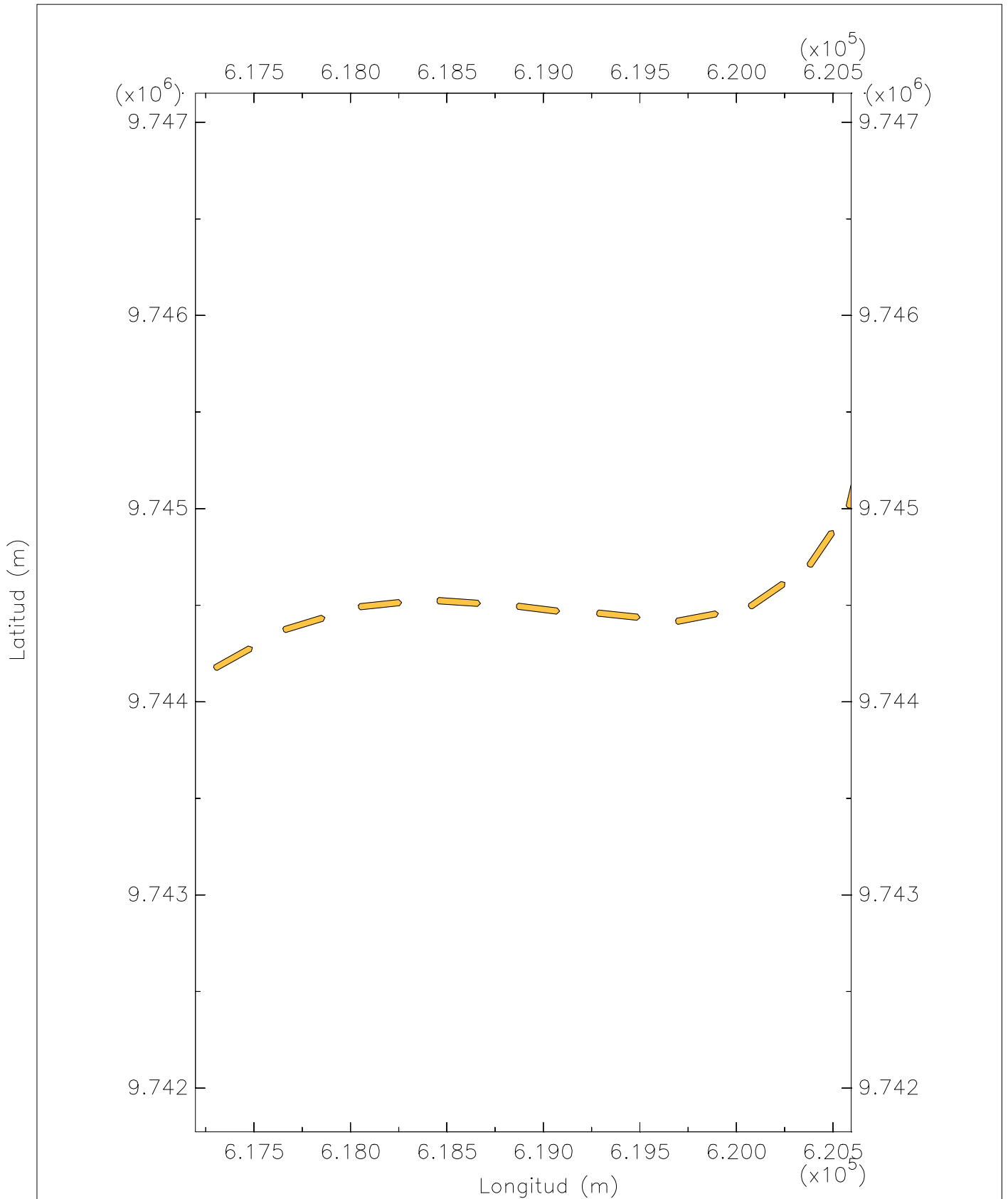






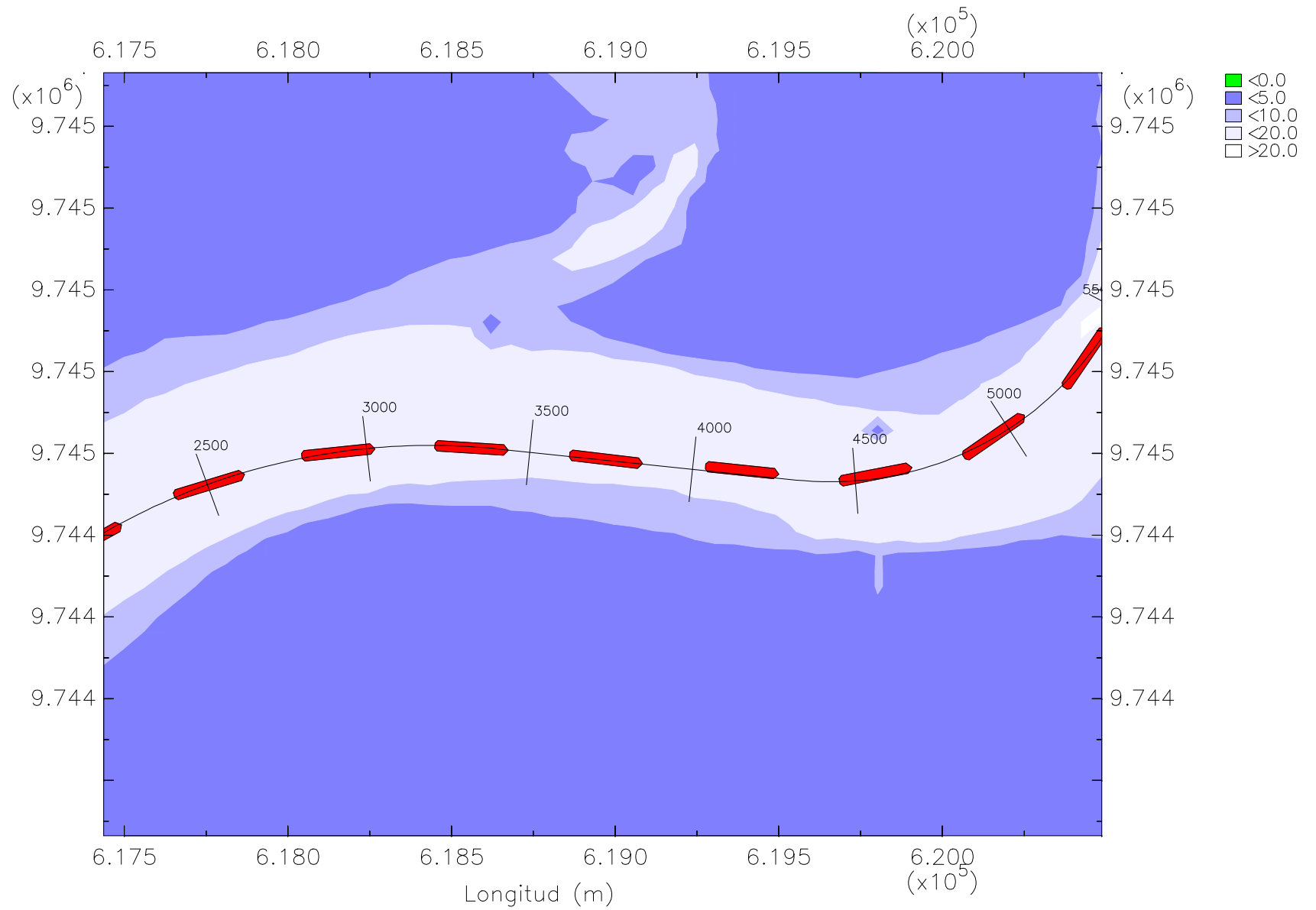


Zona 3 Tramo 2 Eje del canal



Z3T2 Trayectoria del barco granelero en flujo

Latitud (m)



Z3T2 Trayectoria del barco granelero en flujo